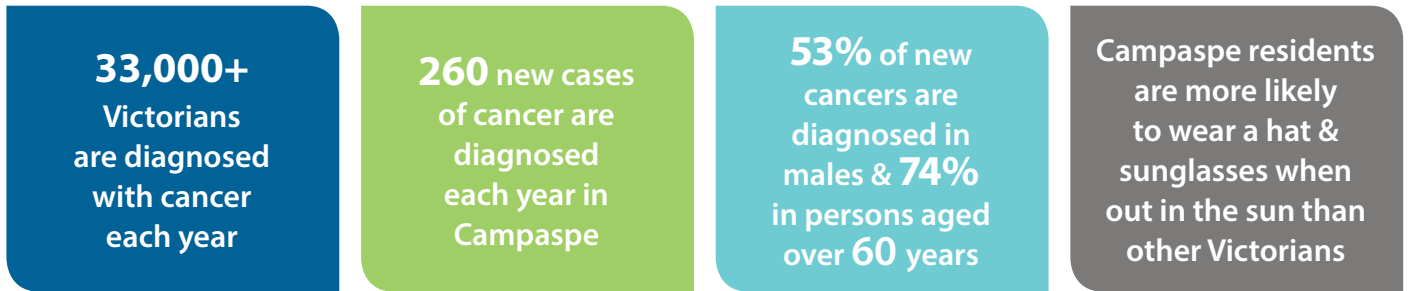




## Current Cancer Status

### Local statistics



### How to cut your risk



### Further information

#### CANCER COUNCIL

ph: 13 11 20

[www.cancer.org.au](http://www.cancer.org.au)

[www.cancerpathways.org.au](http://www.cancerpathways.org.au)

#### SCREENING KITS

[www.cancerscreening.gov.au](http://www.cancerscreening.gov.au)

#### QUITLINE (quit smoking)

ph: 13 78 48

[www.quit.org.au](http://www.quit.org.au)

#### LIVE LIGHTER

[www.livelighter.com.au](http://www.livelighter.com.au)

#### BOWEL CANCER AUSTRALIA

ph: 1800 555 494

#### BREAST CANCER NETWORK AUSTRALIA

ph: 1800 500 258

#### LEUKAEMIA FOUNDATION

ph: 1800 620 420

#### MYELOMA FOUNDATION

ph: 1800 693 566

#### OVARIAN CANCER AUSTRALIA

ph: 1300 660 334

#### PROSTATE CANCER FOUNDATION AUSTRALIA

ph: 1800 220 099

#### CANCER WELLNESS PROGRAM

ph: 13 11 20

### Local services

Echuca Regional Health ph: 5485 5800 (Cancer Nurses)

Kyabram District Health ph: 5857 0200 (Cancer Nurses)

Rochester & Elmore District Health ph: 5484 4400

Njernda Aboriginal Corporation ph: 5480 6252

Goulburn Valley Health ph: 5851 8000

#### GP's

Cancer information, treatment coordination, chronic disease management.

#### Cancer Support Groups

Face-to-face and online